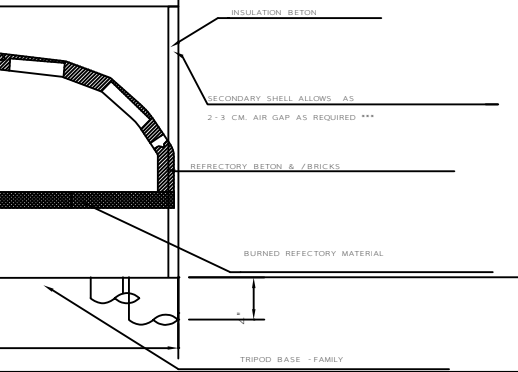


E+ 6"
- APPLY LIBERALLY



non-combustible floor surface.

between the oven and finishing wall, insulating material is an option.

for Solid Fuel Burning Appliances and Equipment.

close proximity to the appliance.

under manufacturer's installation instruction as follows:

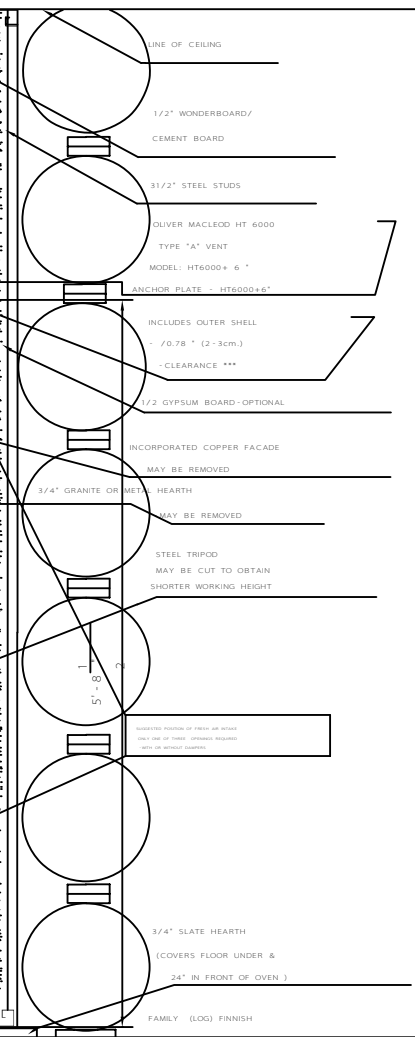
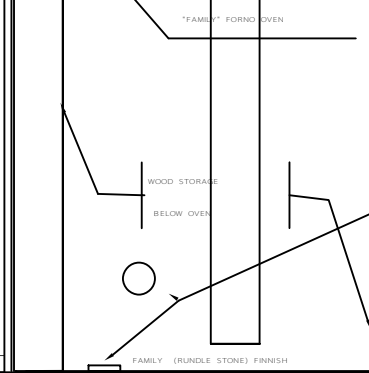
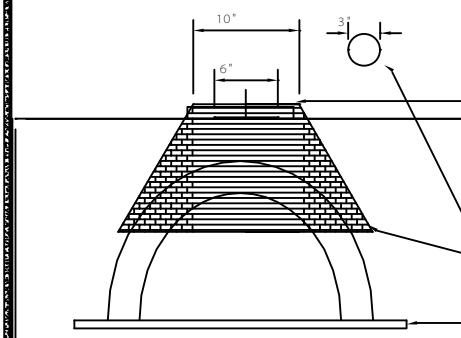
the mouth of the oven.

local guidelines for venting solid fuel burning appliances.

red.

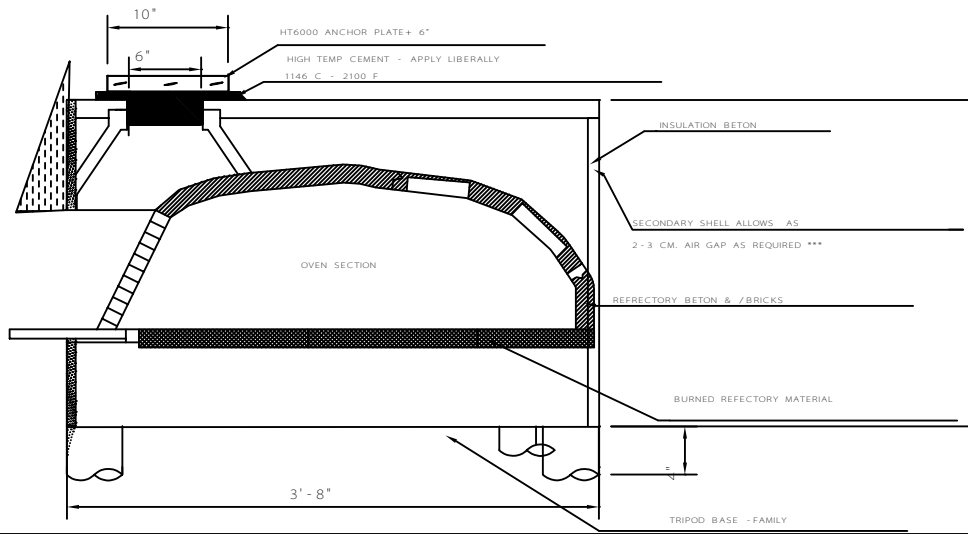
in the oven.

OLIVER MACLEOD HIGH TEMPERATURE CHIMNEY - FOR USE WITH EFFICIENT SOLID FUEL APPLIANCES
SEE: VENTING INSTRUCTIONS - PRODUCT DIRECTORY PROJECT NOVA TEMP - CATALOGUE FOR
TECHNICAL DATA & INSTALLATION INFORMATION IN TYPICAL INSTALLATION ...REGARDING BREACHING
OF WALLS, FLOOR, ATTIC, ROOF AND APPLICABLE TOLERANCES.



JOLLY OPTION A (FIELD STONE) ON CINDERBLOCK FOUNDATION

JOLLY OPTION B (RUNDLE STONE)



INSTALLATION INSTRUCTIONS
MODEL FAMILY / JOLLY/MEC 60
AMEROGI WOODBURNING PIZZA OVENS

The oven may be installed in an area of the restaurant/home/patio, indoors or outdoors that has a non-combustible floor surface.

The supporting wall must be manufactured in cinder block, brick, concrete or metal.

The finishing wall must be manufactured using metal studs and concrete/wonderboard.

A minimum of 3-4 cm. of clearance must be left between the inner and outer shell of oven, or between the oven and finishing wall, insulating material is an option.

The oven shall be connected to a factory built chimney to CAN/ULC-5629M Standards.

Installation of necessary flue pipes or breach must follow section 5.3 of CAN/CSA-8365 Installation for Solid Fuel Burning Appliances and Equipment.

The above applies to the venting requirements only.

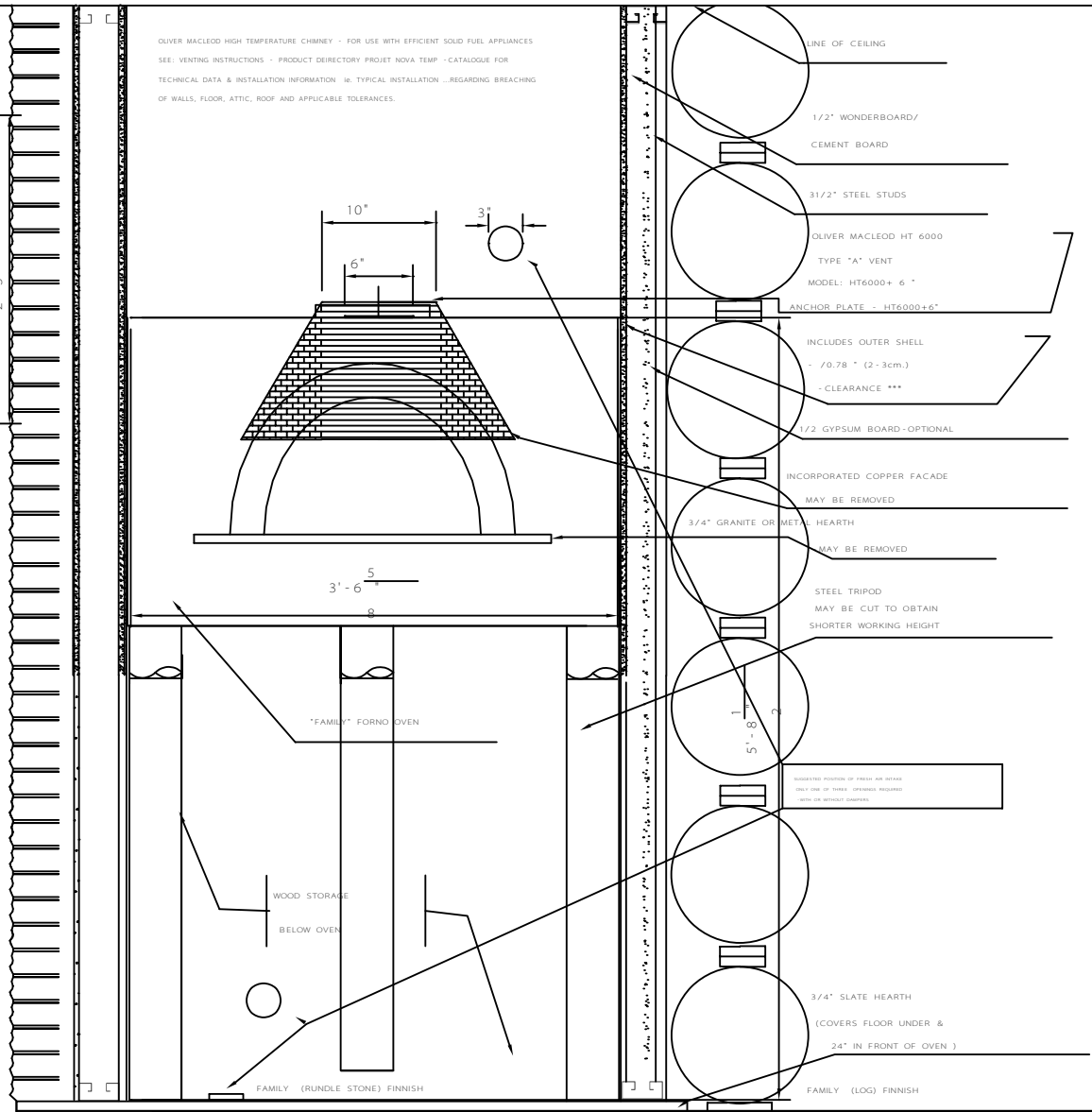
A combustion air supply opening having an area 0.5 times the flue collar area shall be provided in close proximity to the appliance.

Assembly on the oven unit on-site shall be performed by qualified tradesmen in strict conformance under manufacturers installation instruction as follows:

- Place the oven on the supporting wall and finish to desired look.
- If sub-floor exists, allowances should be made to compensate for the added working height of the mouth of the oven.
- Connect to a type "A" flue, by means of ANCHOR PLATE, to be performed in accordance with local guidelines for venting solid fuel burning appliances.
- The operation of this oven is based on natural draught; therefore no mechanical venting is required.
- No mechanical or manual dampers required.
- The oven is non-conducting. However, additional insulation may be placed on top of the oven.

Common sand or vermiculite is acceptable and should be spread liberally on to.

-The new oven must be heated slowly over a period of several days to help in curing or breaking-in the oven.



MR. CAPPUCCINO
B1, 416 Meridian Rd. S.E.
CALGARY, AB
P: 403-230-8636
E: coffee@agt.net
F: 403-277-2874

dwg. name:
JOLLY / FAMILY

dwg. scale:
1:1

dwg. WC

date: 27.07.2009

revisions:
dwg. no.

